



AUTOMOTIVE DEALERSHIP

713 SE M-291 Highway, Lee's Summit, Missouri



CONFIDENTIAL - PLEASE DO NOT DISTURB CURRENT TENANT

SALE PRICE: \$2,000,000 | 5,476 SF BUILDING ON 27,491 SF LOT

DEMOGRAPHICS

	1 mile	3 miles	5 miles
Estimated Population	8,515	50,501	94,371
Avg. Household Income	\$119,893	\$118,851	\$134,670

- Prime location
- New intersection coming in 2024 with frontage on Blue Parkway and 7th Terrace
- High visibility and traffic
- Pad site opportunity
- Five bays



CLICK HERE TO VIEW MORE LISTING INFORMATION

For More Information Contact:

BILL MAAS, CCIM | 816.412.7392 | bmaas@blockandco.com

Exclusive Agent



PHOTOS

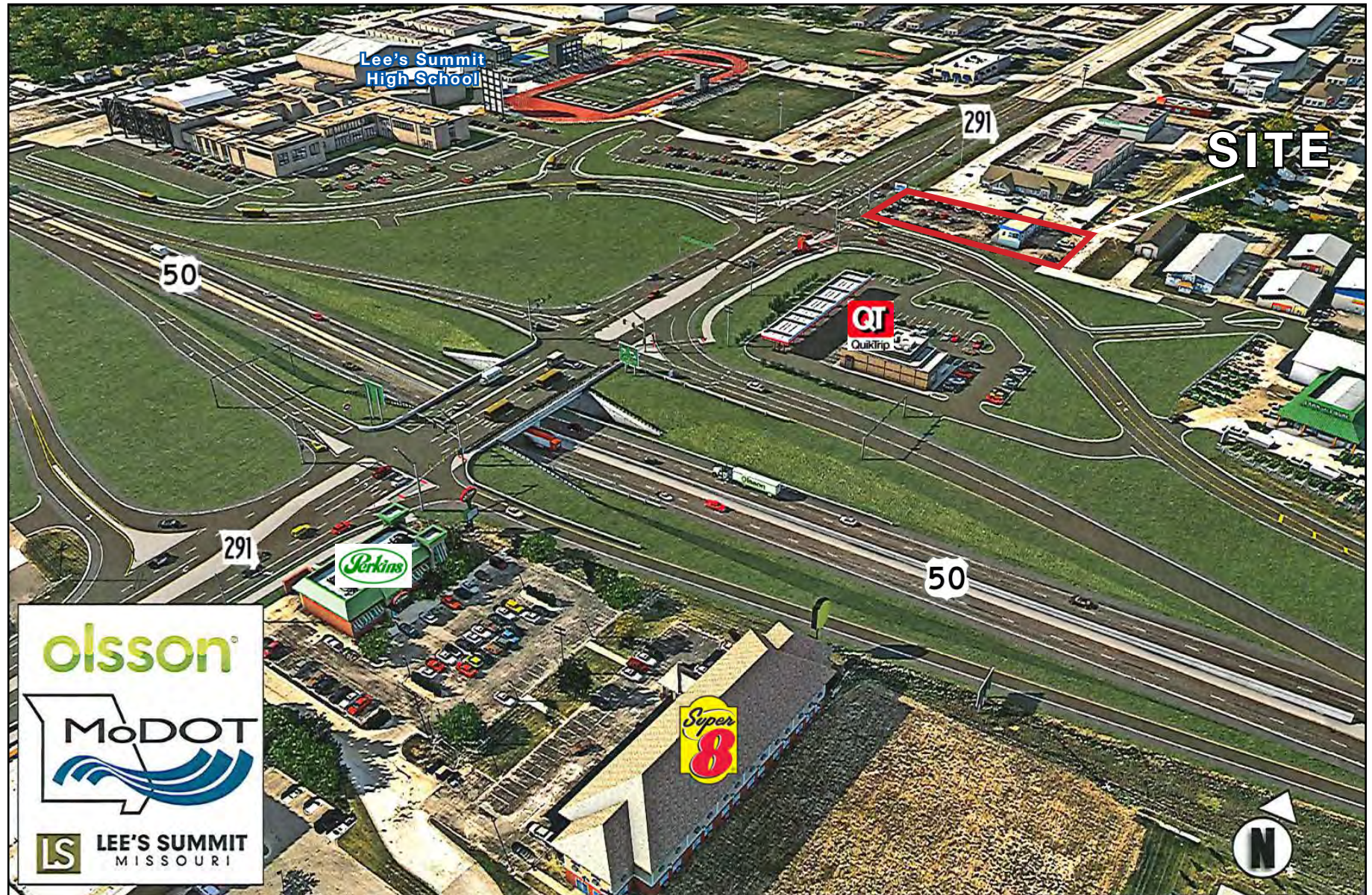




AUTOMOTIVE DEALERSHIP

713 SE M-291 Highway Lee's Summit, Missouri

PLANNED INTERSECTION REDEVELOPMENT



olsson
 MoDOT
 LS LEE'S SUMMIT MISSOURI

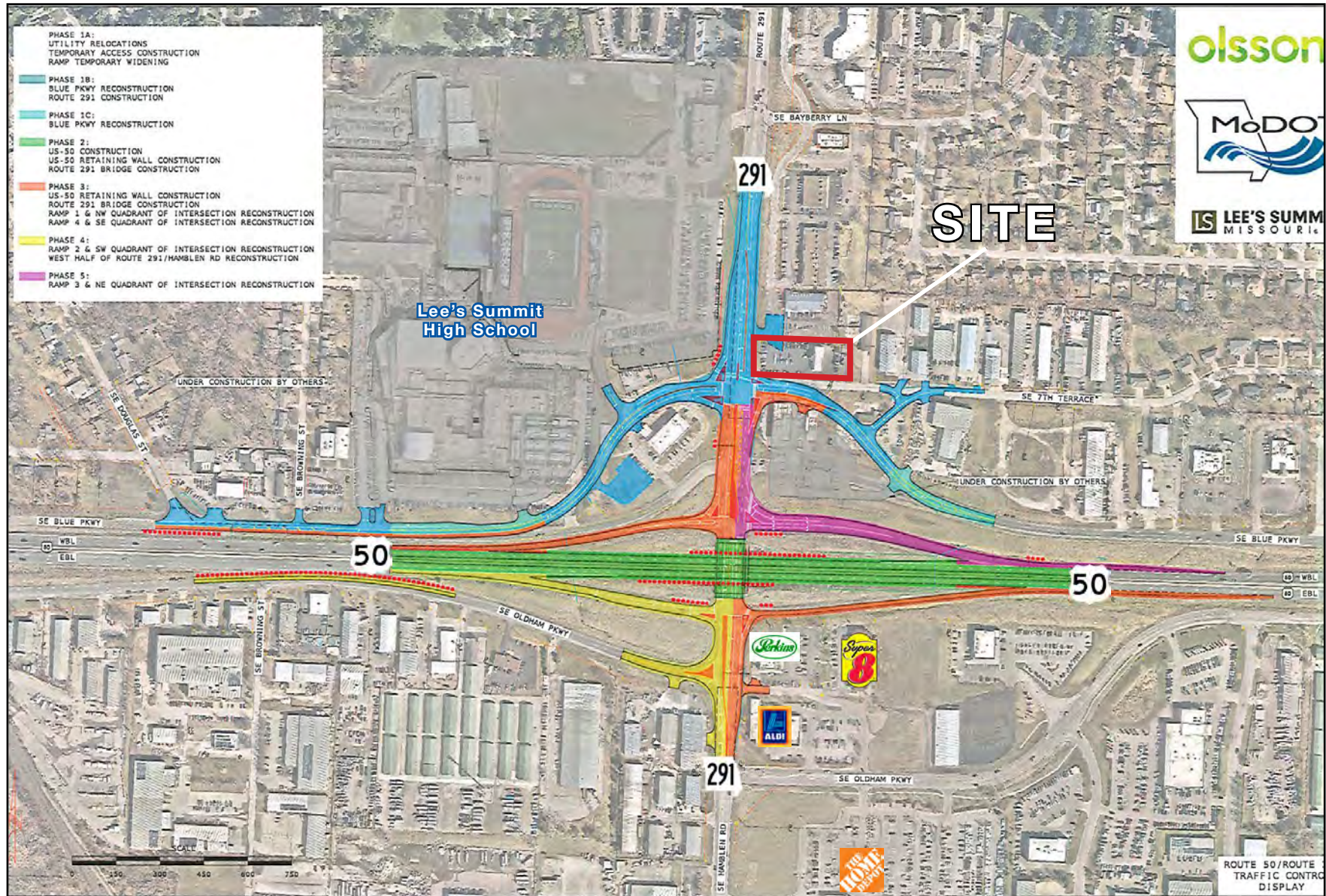




AUTOMOTIVE DEALERSHIP

713 SE M-291 Highway Lee's Summit, Missouri

PLANNED INTERSECTION REDEVELOPMENT

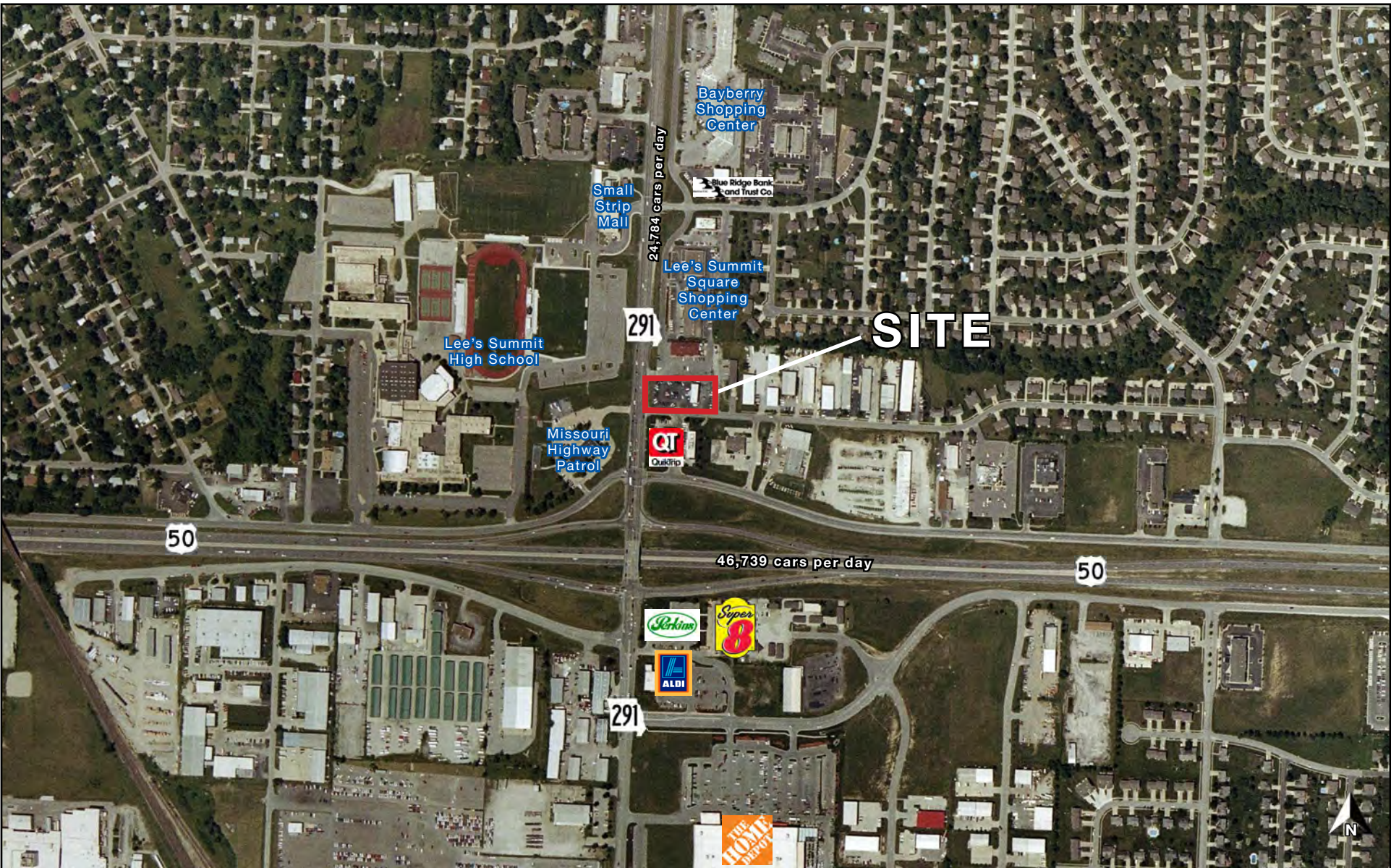


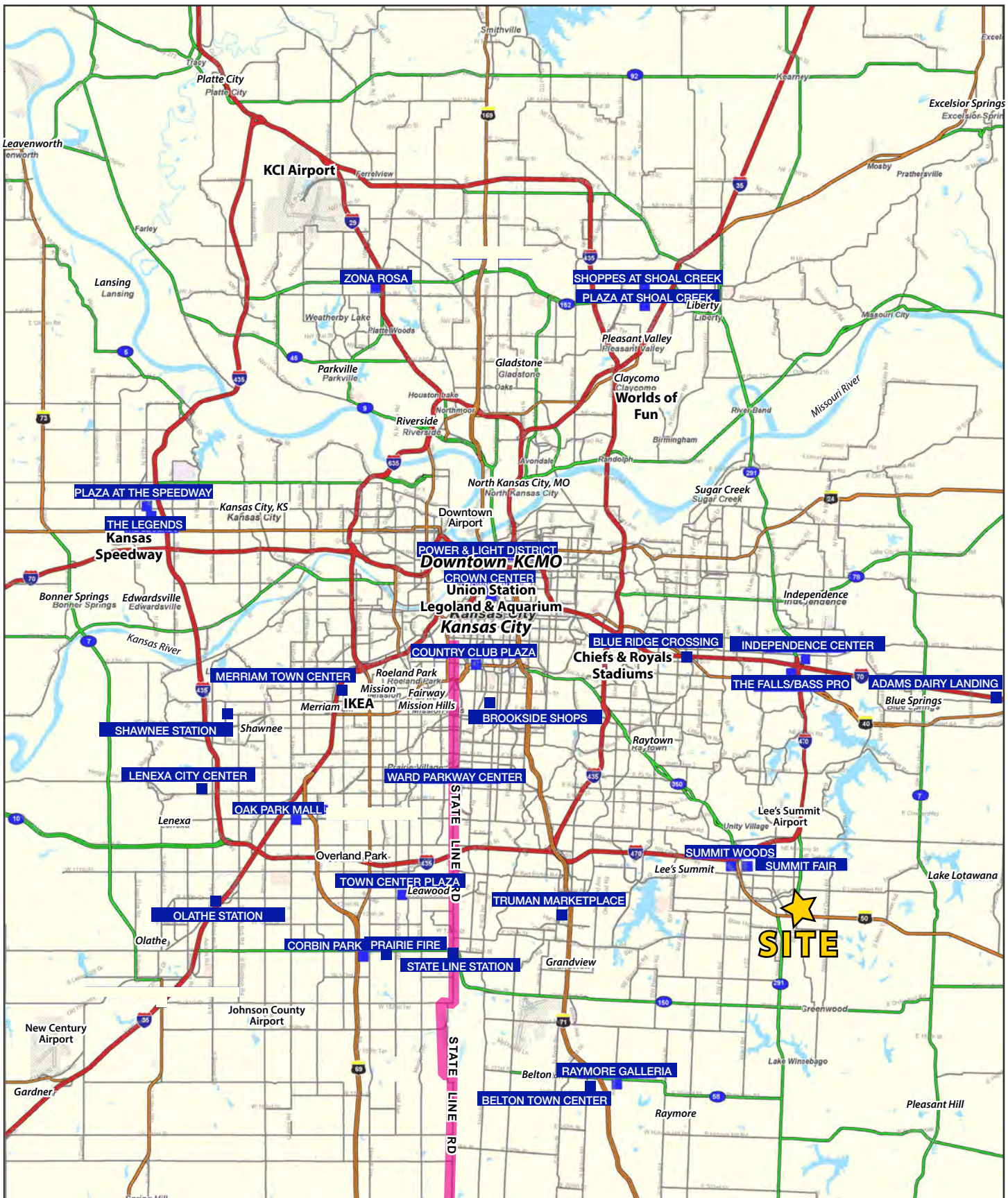


AUTOMOTIVE DEALERSHIP

713 SE M-291 Highway Lee's Summit, Missouri

AERIAL

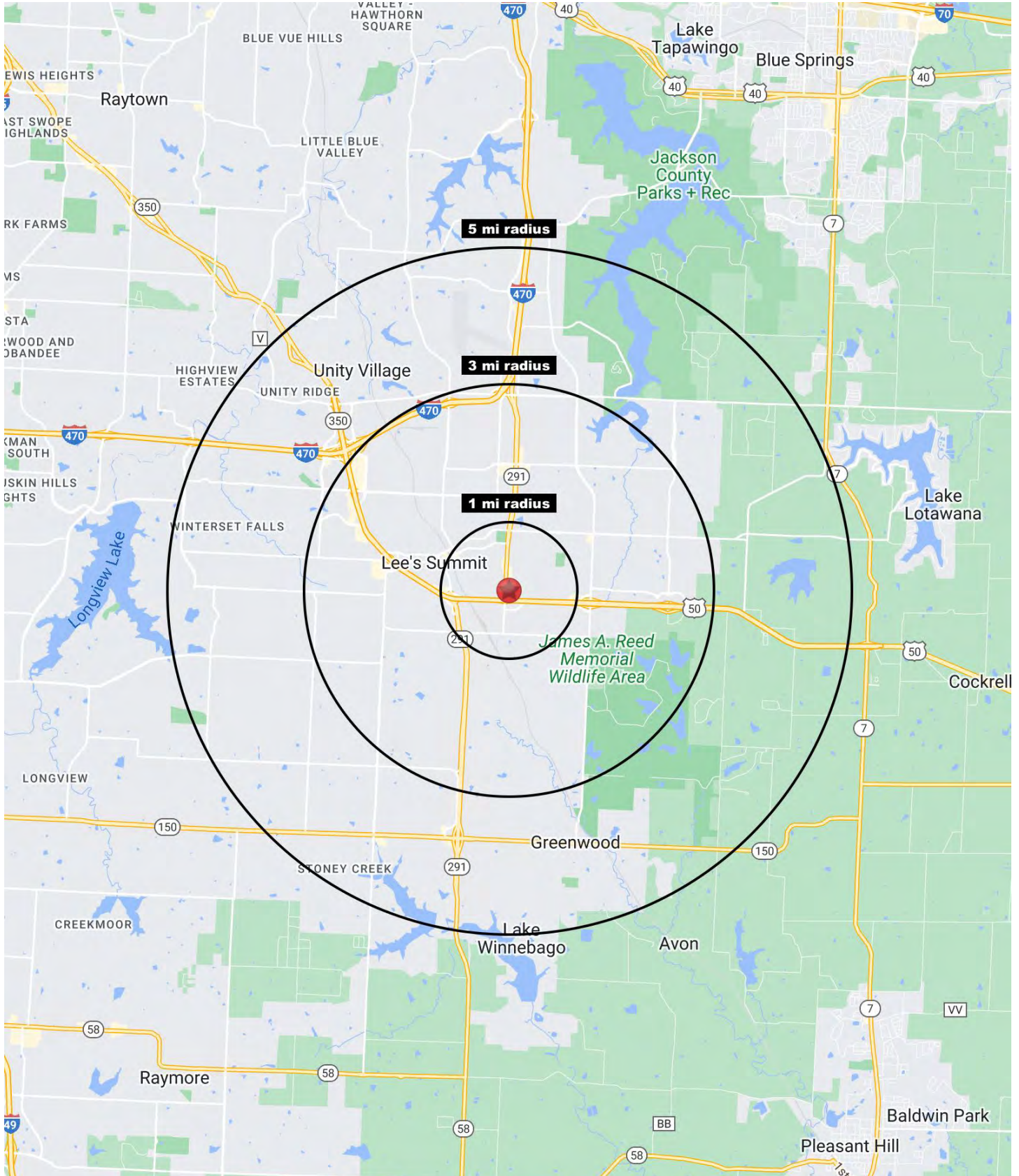






AUTOMOTIVE DEALERSHIP

713 SE M-291 Highway Lee's Summit, Missouri





AUTOMOTIVE DEALERSHIP

713 SE M-291 Highway Lee's Summit, Missouri

713 SE M-291 Highway Lee's Summit, MO 64063	1 mi radius	3 mi radius	5 mi radius
Population			
2023 Estimated Population	8,515	50,501	94,371
2028 Projected Population	8,394	51,096	101,361
2020 Census Population	9,095	52,380	94,396
2010 Census Population	9,082	50,557	85,371
Projected Annual Growth 2023 to 2028	-0.3%	0.2%	1.5%
Historical Annual Growth 2010 to 2023	-0.5%	-	0.8%
2023 Median Age	37.1	38.0	38.2
Households			
2023 Estimated Households	3,514	21,140	37,495
2028 Projected Households	3,422	21,053	39,578
2020 Census Households	3,705	21,052	35,684
2010 Census Households	3,606	20,004	31,969
Projected Annual Growth 2023 to 2028	-0.5%	-	1.1%
Historical Annual Growth 2010 to 2023	-0.2%	0.4%	1.3%
Race and Ethnicity			
2023 Estimated White	81.1%	80.3%	80.0%
2023 Estimated Black or African American	9.7%	9.9%	10.9%
2023 Estimated Asian or Pacific Islander	1.5%	2.0%	2.2%
2023 Estimated American Indian or Native Alaskan	0.3%	0.3%	0.3%
2023 Estimated Other Races	7.4%	7.5%	6.7%
2023 Estimated Hispanic	6.3%	6.2%	5.6%
Income			
2023 Estimated Average Household Income	\$119,893	\$118,851	\$134,670
2023 Estimated Median Household Income	\$87,828	\$90,740	\$104,072
2023 Estimated Per Capita Income	\$49,492	\$49,779	\$53,558
Education (Age 25+)			
2023 Estimated Elementary (Grade Level 0 to 8)	0.6%	1.5%	1.4%
2023 Estimated Some High School (Grade Level 9 to 11)	2.0%	2.6%	2.3%
2023 Estimated High School Graduate	22.2%	21.9%	19.9%
2023 Estimated Some College	28.6%	21.8%	20.8%
2023 Estimated Associates Degree Only	12.3%	10.4%	9.4%
2023 Estimated Bachelors Degree Only	21.4%	27.0%	28.7%
2023 Estimated Graduate Degree	12.7%	14.7%	17.6%
Business			
2023 Estimated Total Businesses	746	2,469	3,816
2023 Estimated Total Employees	6,471	24,957	36,426
2023 Estimated Employee Population per Business	8.7	10.1	9.5
2023 Estimated Residential Population per Business	11.4	20.5	24.7

©2024, Sites USA, Chandler, Arizona, 480-491-1112 Demographic Source: Applied Geographic Solutions 11/2023, TIGER Geography - RS1

